



Network traffic capture and analysis at up to 20 Gbps

The Capture Probe eXtreme (CPX) is the key collection component of the Cyclone Network Forensics Platform, enabling analysts to quickly search recorded network traffic and analyze advanced persistent threats, zero-day web exploits, CnC, and other security- and network-related events.

The CPX captures 100% of the traffic and time stamps every packet with nanosecond resolution while recording packets to disk. It generates a multi-tiered index for all packets and connections, allowing quick retrieval and reconstruction of network sessions for analysis.

100% Traffic Capture and Processing

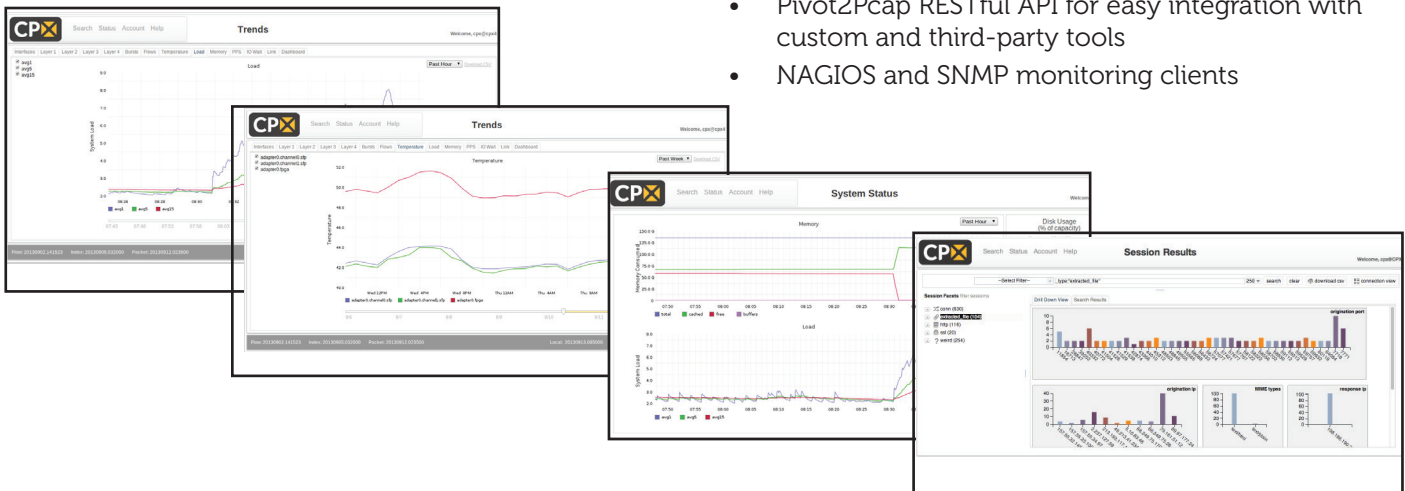
The scalability and 20Gbps performance of the CPX provides for cost-effective packet capture from the fastest core and data center links to aggregated edge, internet and remote office connections, helping organizations expand their visibility from the corporate headquarters and data centers down to remote, branch, and mobile offices. Easy integration with third-party security management tools allows analysts to pivot from security events to actual network traffic within seconds, reducing mean time-to-resolution for incident response.

The CPX browser-based interface allows drill-down and analysis of selected packets and sessions. All packets, session data, and extracted files are searchable and available for download via a RESTful API in industry-standard formats.

Targeted Solutions

- Network forensics
- Security operations
- Security incident response

- Continuous, lossless packet capture at up to 20 Gbps in industry-standard PCAP format
- IPv6 support for all capture, index, and search capabilities
- Export of flow records in NetFlow v5, v9 and IPFIX formats for use with other flow analysis tools (1:1 NetFlow record generation)
- Real-time indexing of captured packets using time-stamp and connection attributes
- Ultrafast search and retrieval of target connections and packets using patent-pending indexing architecture
- Web-based, drill-down UI for search and inspection of packets, connections, and sessions
- Session decoder support for viewing and searching HTTP, SMTP (email), FTP, DNS, chat, SSL connection details and file attachments
- Packet payload search using regular expressions (regex)
- Dynamic graphing statistics and trending for link bandwidth, Layer 1-4 protocols, micro-bursts, system info and flows for up to 1 year
- Up to 144 TBytes of traffic recording in one appliance, or expandable to petabytes with fiber-attached storage options
- Data storage and export in industry-standard PCAP format
- Pivot2Pcap RESTful API for easy integration with custom and third-party tools
- NAGIOS and SNMP monitoring clients



Specifications

nPulse CPX model	capture port configuration	max record speed*	total onboard traffic storage	dimensions (HxWxD)	power supply & typical operating load
CPX004S	1 x 4Gbps, SFP	500Mbps	2 TB	1U rack height 17x16.8x14 in	200W low noise AC power 100-240V, 60-50 Hz auto ranging
CPX004T	1 x 4Gbps, RJ-45				
CPX1004S	4x1Gbps, SFP+	2Gbps	4 to 16 TB	1U rack height 1.7x17.2x25.6 in 4.3x43.7x65.0 cm 46.0 lbx (20.9 kg)	650W high-efficiency (1+1) redundant AC power 100-240 V, 60-50 Hz au- to-ranging 230-280 W typical
CPX1004T	4x1 Gbps, RJ-45				
CPX2004S	1 x 4Gbps, SFP	4Gbps	12 to 48 TB	2U rack height 3.5x17.2x25.5 in 52 lbs (23.6 kg)	1280W high-efficiency (1+1) redundant AC power 100-240V, 60-50 Hz auto ranging
CPX2004T	1 x 4Gbps, RJ-45				
CPX2020	2 x 10Gbps, SFP+	5Gbps			
CPX2040	2 x 10Gbps, SFP+				
2004ESS	4 x 1Gbps, SFP	4Gbps	Expandable SAS attached storage	2U rack height 3.5x17.2x25.5 in 52 lbs (23.6 kg)	1280W high-efficiency (1+1) redundant AC power 100-240V, 60-50 Hz auto ranging
2020ESS	2 x 10Gbps, SFP+	10-20Gbps			
2040ESS	4 x 10Gbps, SFP+				
2000SX	n/a	n/a	12 to 48 TB storage shelf expansion for ESS models	2U rack height 3.5x17.2x25.5 in 52 lbs (23.6 kg)	500W high-efficiency (1+1) redundant AC power 100-240V, 60-50 Hz auto ranging
1004EXT	4 x 1Gbps, SFP	4Gbps	No onboard storage. Fiber HBA to external SAN/ NAS storage	1U rack height 1.7x17.2x25.6 in 4.3x43.7x65.0 cm 46.0 lbx (20.9 kg)	650W high-efficiency (1+1) redundant AC power 100-240 V, 60-50 Hz auto-ranging 230-280 W typical
1020EXT	2 x 10Gbps, SFP+	10Gbps			
1020EXT2	2 x 10Gbps, SFP+	20Gbps			

* Record-to-disk speed, aggregate across all ports



Additional Specifications

Lossless wire-speed capture:

- Line-rate for all frame sizes

Precision packet timing for capture:

- 10 ns resolution
- External time-sync option (1PPS or IEEE 1588)

Dedicated management ports (1 or 10 Gbps)

About nPulse Technologies, Inc.

nPulse Technologies is the performance leader in network forensics. Leading financial institutions, government agencies, telecommunications carriers and other organizations rely on nPulse solutions to enhance security monitoring, shorten incident response times, and increase returns on existing security investments.

For network forensic analysts looking to significantly reduce incidence response time, nPulse solutions enable

expeditious reconstruction of the kill chain. Unlike competitive solutions that are unable to operate at 10Gbps sustained and take hours to analyze network traffic, our solutions are designed to perform at 10Gbps full duplex, capturing, inspecting, and exposing indications of compromise within minutes, all at a fraction of the cost.

For more information, visit www.npulsetech.com.