

Traditional TAPs require insertion into the cable infrastructure requiring additional rack space and adding additional insertion loss. The Mimetrix TAPatch cassette integrates passive TAP functionality into your patching system providing a "ZERO U" Tap solution.

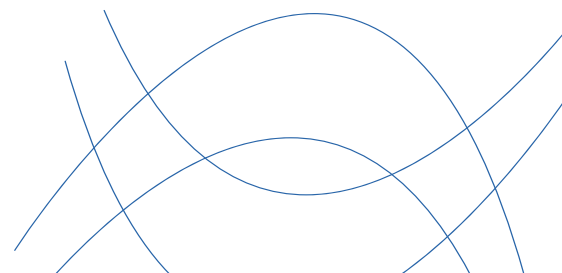
The TAPatch cassette requires no power and is available in Single- or Multimode and available in a variety of split ratios. The Monitored signal is presented to a rear facing, keyed MTP connector.

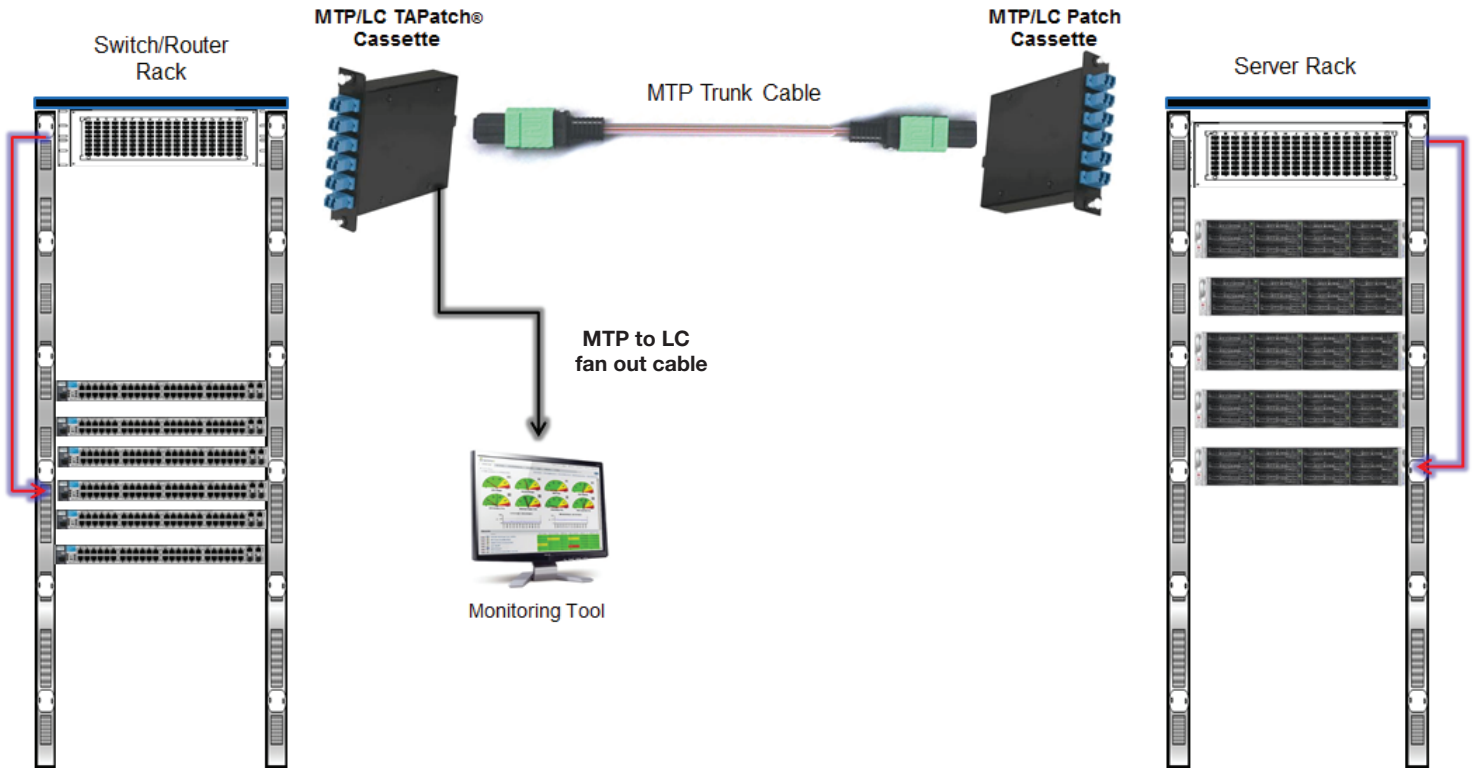
Available in 1/10 GIG, 40 GIG (40Gbase SR4) or 100 GIG (100Gbase SR-10) LGX style cassettes to serve you current and future monitoring requirements.

Integrate passive TAP functionality into patching systems providing a "ZERO U" Tap solution.

### Key Features & Benefits

- "ZERO U" Optical TAP and Patch Solution
- Industry Standard LGX Style Cassette
- Integrates into existing Structured Cabling
- MTP based TAP and Trunk Ports, rear exiting
- LC Style connectors front facing to equipment
- Advanced splitter technology for minimal insertion loss





## SPECIFICATIONS

Dimensions	5.125" high x 6.125" length x 1.125" wide
Connectors	MTP Elite/LC Duplex
Fiber Type	OM4 Multi mode, OS1/OS2 Single mode - 12 strand ribbon fiber
Split Ratio	50/50 or 70/30
Insertion Loss	Not to exceed 4.2dB MM or 4.0db SM at 50/50 Split Ratio

## PART NUMBERS

Part Number	Description
TPC-10G-M-M-LC-50-1	TAPatch LGX Cassette with 2 MTP and 12 LC, OM3, 50/50
TPC-10G-M-M-M-50-1	TAPatch LGX Cassette with 3 MTP, OM3, 50/50
TPC-40G-M-M-M-50-1	TAPatch LGX Cassette 4 MTP, OM4, 40GBASE SR4, 50/50
TPC-100G-M-M-M-50-1	TAPatch LGX Cassette 4 MTP, OM4, 100GBASE SR10, 50/50
TPC-10G-M-M-LC-70-1	TAPatch LGX Cassette 2 MTP and 12 LC, OM3, 70/30
TPC-10G-M-M-M-70-1	TAPatch LGX Cassette 3 MTP, OM3, 70/30
TPC-40G-M-M-M-70-1	TAPatch LGX Cassette 4 MTP, OM4, 40GBASE SR4, 70/30
TPC-100G-M-M-M-70-1	TAPatch LGX Cassette 4 MTP, OM4, 100GBASE SR10, 70/30
TPC-10G-M-M-LC-50-2	TAPatch LGX Cassette 2 MTP, and 12 LC, OS1, 50/50
TPC-10G-M-M-M-50-2	TAPatch LGX Cassette 3 MTP, OS1, 50/50
TPC-10G-M-M-LC-50-2	TAPatch LGX Cassette 2 MTP, and 12 LC, OS1, 70/30
TPC-10G-M-M-M-50-2	TAPatch LGX Cassette 3 MTP, OS1, 70/30

