



XenaIntegrator

Makes large-scale testing even easier

XenaIntegrator is a free PC application that makes it easy to handle large numbers of test streams when using both simple and complex systems of XenaBay and XenaCompact test solutions. It features the same type of simple intuitive GUI as our Xena2544 and Xena1564 applications, making it very easy to learn.

Port Statistics Polling

XenaIntegrator lets users continuously poll a number of test ports for various purposes.

Counter Logging - Counter values can either be saved to a CSV or XML log file for later offline processing. You can select which counter types you want to include in the log. Each log line is marked with a timestamp. The size of the log files can be limited using the standard rolling archive mechanism.

Realtime Charting - This function lets you view a lineplot for each selected stream which is updated in real time. For each stream you can monitor the throughput, loss, latency and jitter values.

The charts display samples within a specific timespan, typically using a "sliding window" mechanism where new samples are displayed at the right and old samples are dropped off at the left. All samples are however saved in an internal database so you can easily pan and/or zoom to view older samples.

Advanced Stream Editor (ASE)

XenaIntegrator lets users quickly specify and create many test streams with similar capabilities between a selected number of ports using an Advanced Stream Editor (ASE). The ASE uses a collection of ports and stream configuration parameters, which is referred to as an Advanced Stream Definition - ASD. This enables the XenaIntegrator to quickly create a number of test streams with common settings on the selected ports.

Full flexibility in defining the protocol segments is offered at the same level as provided by the XenaManager.



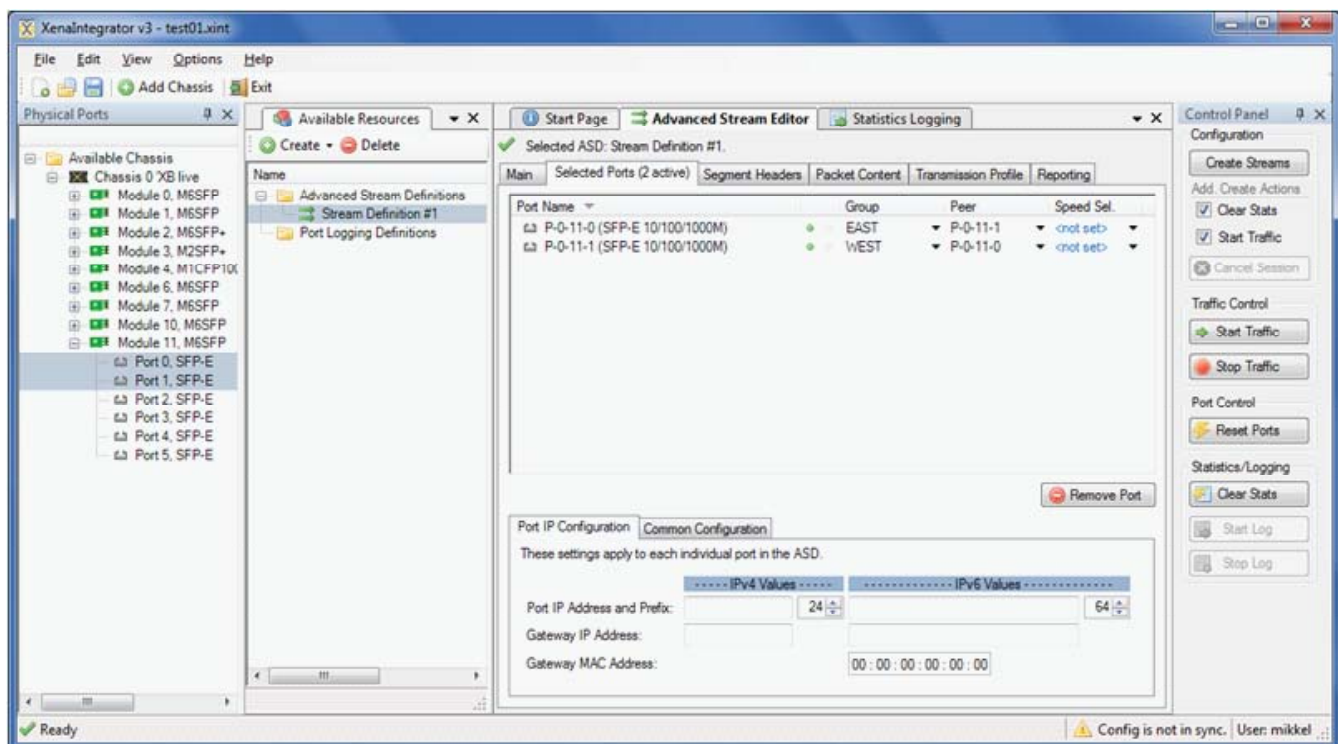
TOP FEATURES

Port Statistics Logging

- Ability to continuously poll statistics counters for selected ports and streams
- Write polled counters to either CSV or XML files
- Present realtime charts of throughput, loss, latency and jitter for selected streams

Advanced Stream Editor

- Quickly setup and create a large number of test-streams with similar capabilities
- Ability to flexibly define protocol layers using a wide range of protocols
- Intelligent handling of MAC and IP address fields
- Ability to define field value variations across streams
- Centralized start and stop of traffic
- Centralized clearing of statistics
- Supports different network topologies and traffic flow directions



Main XenaIntegrator view showing 2 ports in a Stream Definition in the Advanced Stream Editor (ASE).



XenaIntegrator also offers an intelligent handling of the MAC and IP address fields. By default XenaIntegrator will fill in the DMAC and SMAC header fields with correct values, and will also handle the IP source and destination fields. The user can however choose to override selected fields if necessary. An automatic ARP resolve feature for an optional IP gateway is also offered.

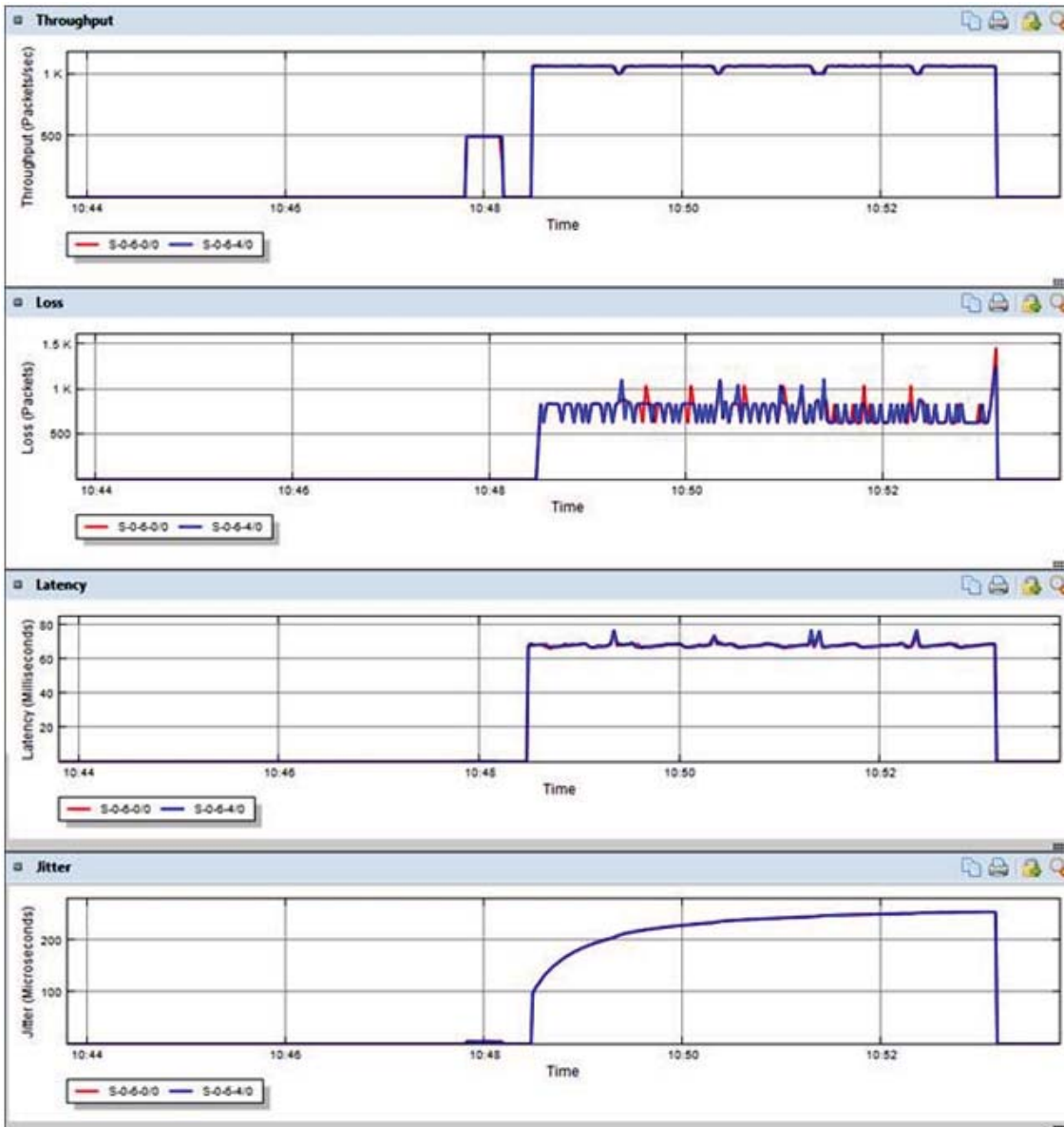
Modifiers

By default all field values will have the same values for all the streams you create using XenaIntegrator. You can however specify one or more modifiers for protocol fields. XenaIntegrator supports two different types of modifiers:

- The *Multi-Stream Modifier* creates one traffic stream for each modifier value. The Rx statistics will show data for each modifier value. You can specify the relative bandwidth allocation between the defined modifier values.
- A *Simple Modifier* is a hardware-based modifier for a single stream. The Rx statistics will collapse data for all modifier values into a single value. You can create multiple simple modifiers for each ASD.

PCAP File Import

You can also import the protocol segment structure from a PCAP file captured using Wireshark or any other capture application capable of generating a standard PCAP file. If the file contains multiple packets XenaIntegrator will display a list allowing you to select the desired packet.



Real-time charting of selected parameters, such as throughput, loss, latency and jitter.



Further resources:

- wiki.xenanetworks.com
- www.xenanetworks.com/html/documentation.html

Xena Networks is an award-winning manufacturer of advanced Gigabit Ethernet test and measurement solutions.

Presented by:
Mimetrix Technologies
 11160 C-1 South Lakes Drive
 Suite 190
 Reston, VA 20191
 Phone: 571-306-1234
 Email: xena@mimetrix.com

