



# XenaManager

## Free, easy-to-use GUI for Xena testers



The XenaManager software enables the traffic generation and analysis features of the Xena test equipment. Every Xena chassis has a dedicated standard 1G Ethernet management port connecting the chassis to an IPv4 network, through which the equipment can be discovered by XenaManager software. Each chassis has a configurable IP address and can thus potentially be accessed from anywhere.

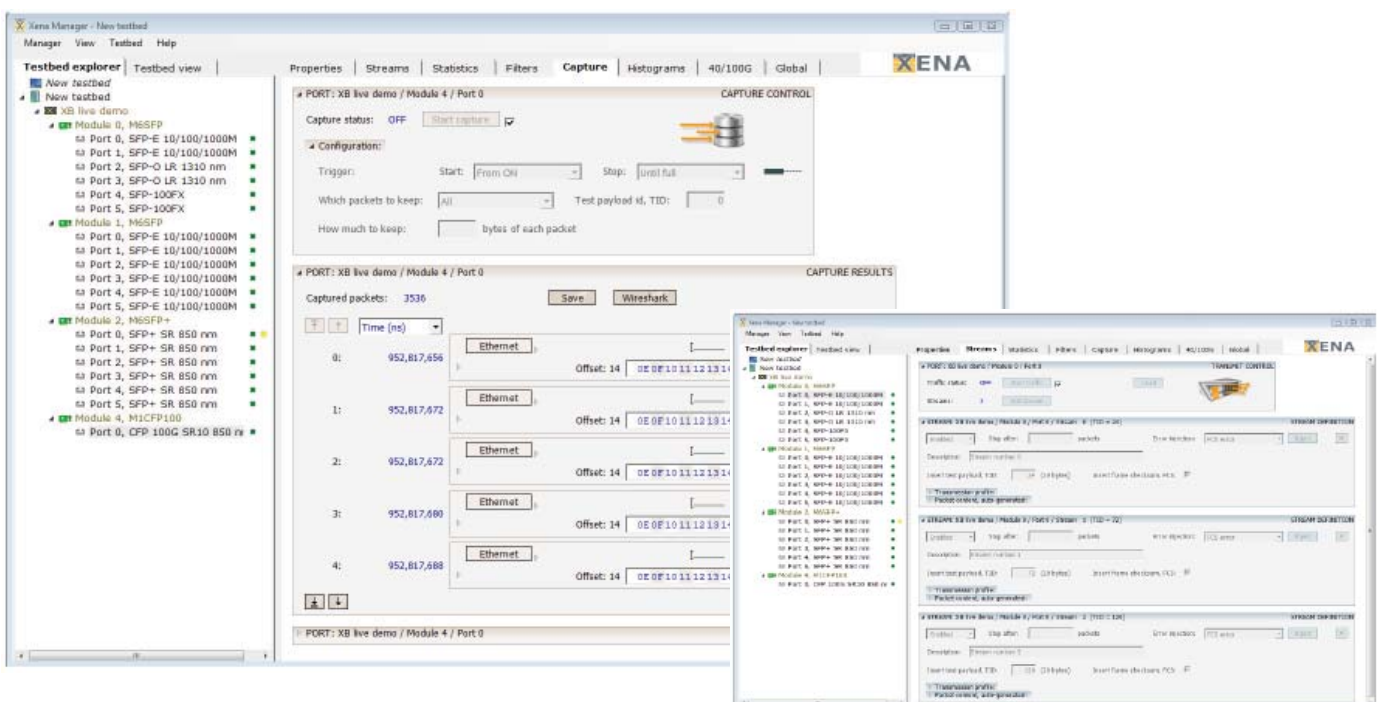
XenaManager can organize the discovered equipment into user defined test-bed setups, and supports multi-user environments. Hardware resources can be reserved down to test port level granularity from multiple simultaneous XenaManager sessions. XenaManager offers lab managers the ability to perform software and firmware upgrades, eliminating the need to directly interface with the equipment.

All features of the Xena equipment can be enabled and accessed from XenaManager, which provides interfaces for configuring chassis and test port properties, defining advanced traffic streams for traffic generation, specifying filters for incoming traffic, performing real-time capture of packets, and for displaying and analyzing traffic statistics.

XenaManager's packet editor function supports both protocol (IP, VLAN, UDP, etc.) and byte-level packet definitions, and the packet capture function also has the capability to automatically decode the packet content at the protocol level.

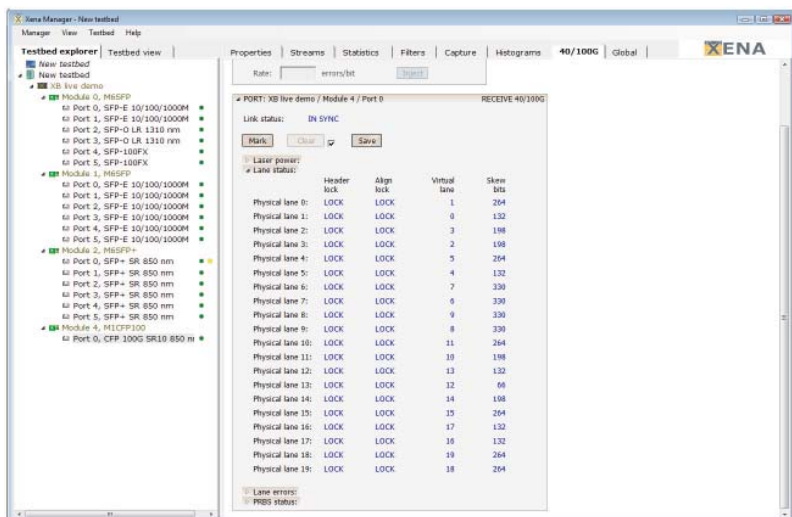
### Top Features - XenaManager

- Easy management of multiple Xena chassis by multiple users in different locations via TCP/IP
- Multi-user sharing of chassis resources down to the port level
- Discovery of Xena hardware located on the same (LAN) IP subnet
- Central management of multi-chassis testbed environments
- Explorer-based and front-panel layout view of testbed configurations
- Import/export of test case configurations
- Chassis software and firmware upgrades without needing to interface directly with the equipment
- Packet editor with support for both protocol and byte-level packet definitions
- Automatic protocol decoding of incoming packets
- Supplied free with every Xena chassis together with 3 years' free SW upgrades
- Bundle includes XenaScripting, Xena2544, Xena1564 apps and RFC 2889



# Specifications

Feature	XenaManager
Multi chassis environments	XenaManager provides a central means of configuring and controlling multiple chassis, possibly located at different physical locations. User connection to a chassis is password protected, and equipment can be discovered or added manually by IP address.
Multi user environment	The Xena chassis supports multiple XenaManager sessions to a particular chassis, sharing the chassis resources between multiple users and multiple projects.
Testbeds	A testbed is a selection of one or more chassis and selected ports on each of these chassis. The various ports of a chassis may be assigned to different testbeds, and be used by different users. Testbeds can be copied and moved between PCs.
Test cases	A test case is a particular configuration of all the ports of a testbed, including what traffic to generate, which filters are active, what to capture, etc. Test cases can be copied or moved between PCs and chassis.
Navigation	The navigation area provides a explorer-based testbed view, which is complemented by a graphical testbed view of the front-panel layout of each chassis
Packet editor	XenaManager has a compact and flexible editor for creating and inspecting packet data, at the byte and protocol level using built-in layouts for common protocols like Ethernet, VLAN, IPv4, IPv6, UDP, etc. You can edit the data bytes directly using their hexadecimal values, or you can click on the protocol segment labels to bring up a window allowing you to edit the individual protocol fields.
Product upgrades	Software and chassis firmware upgrades can be performed entirely from the Manager, eliminating the need to directly interface with the equipment
Operating system	Microsoft Windows XP or newer



XenaManager comes bundled with Xena2544 and Xena1564 which are free applications developed by Xena Networks for performing RFC2544 and Y.1564 testing. Also included free of charge is XenaScripting – a powerful and easy-to-use command-line-interface (CLI) scripting API that makes test automation easier for test engineers. Script examples of Tcl, Perl, Java and Python are available on our website.

## Further resources:

- [wiki.xenanetworks.com](http://wiki.xenanetworks.com)
- [www.xenanetworks.com/html/documentation.html](http://www.xenanetworks.com/html/documentation.html)



Presented by:  
**Mimetrix Technologies**  
 11160 C-1 South Lakes Drive  
 Suite 190  
 Reston, VA 20191  
 Phone: 571-306-1234  
 Email: [xena@mimetrix.com](mailto:xena@mimetrix.com)



*Xena Networks is an award-winning manufacturer of advanced Gigabit Ethernet test and measurement solutions.*

